

Banyan for MSPs

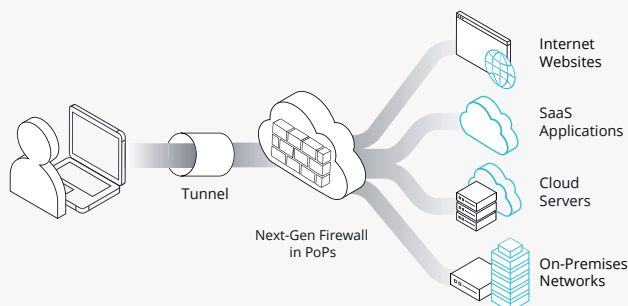
Providing Secure, Device-centric Access to Applications and Resources Allowing a Mobile Workforce to Work from Anywhere

Banyan's Approach

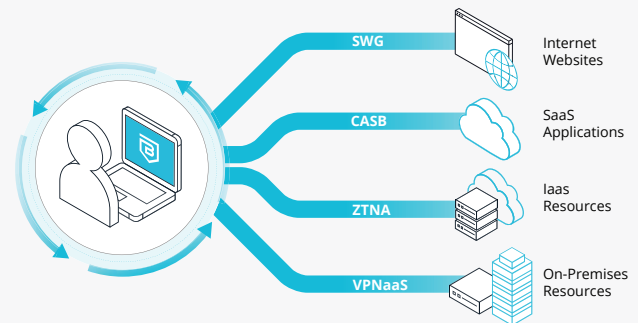
Banyan's modern solution was built with ease of deployment and use in mind. It was developed from the ground up based on modern methods and technology rather than just old code, virtualized to run in the cloud. This results in exceptional performance.

Our device-centric approach is also vastly superior to competitor's legacy models. Modern devices have the processing power to enable local functionality that improves the end user experience, minimizes the need to send traffic for inspection, and truly allows for a secure mobile workforce.

Legacy Network-Centric SSE



Banyan Device-Centric SSE



Advantages of a device-centric approach:

Banyan's approach, which does not require traffic to be routed to our cloud for inspection results in more uptime and stability. Many customers have come to us after putting up with unplanned outages resulting in lost revenue, increased helpdesk calls, and unhappy executives and employees.

- **Granular Control**
- **Improved Compliance**
- **Protection against Advanced Threats**
- **Cost-Effective**
- **Enhanced Visibility**
- **Improved User Experience**

The Banyan Difference

The Banyan Security Platform is trusted by organizations of all sizes and in all verticals, around the world because of these uniquely valuable differences:

Device-Centric Approach

Modern enterprises need a security approach that can safeguard their mobile workforce while giving them access to mission critical applications and resources. Banyan Security's zero trust device centric solution was developed from the ground up to allow employees, contractors and third parties to safely work from anywhere. Built on modern methods and technology, rather than just old code virtualized to run in the cloud, it provides exceptional end user ease of use and performance coupled with a straightforward, uncomplicated deployment.

Unlike legacy solutions, Banyan Security leverages the processing power of modern devices, enabling local functionality that improves the end user experience and minimizes the need to send all traffic to the cloud for inspection. The result is exceptional performance that users demand.

Advanced Security

- Device trust is enforced in real-time using continuous authorization against granular Trust-Based Access Control (TBAC) policies.
- Only Banyan Security offers zero trust access that spans hybrid, multi-cloud, and SaaS-based environments.
- Always-on threat and malware security that doesn't require logging in to an agent.

Flexible Architecture

- The Flexible Edge – Banyan's mesh architecture extends security controls to distributed assets, spanning all environments and protocols. The cloud-native approach leverages the public internet without requiring network tunnels or MitM clouds resulting in a highly performant, yet scalable solution that doesn't risk privacy or data sovereignty. Only Banyan flexibly supports cloud IaaS (Global Edge) while also offering the option for enterprises to self-host their edge (Private Edge).

Easy to Deploy and Use

- Get deployed in 15 minutes or less.
- One-click access to infrastructure and applications – Banyan integrates with customer IaaS and PaaS environments providing one-click access to applications and resources including SSH/RDP servers, VNC, Kubernetes, and databases – even SaaS applications are protected. Least privilege access allows differentiated access for FTEs and third parties alike that is a snap to deploy administer, and audit.
- Service Tunnel offers a super-easy transition from legacy VPNs toward zero trust. It delivers high-performance, tunnel-based access to networks, and is built on a modern WireGuard foundation with continuous authorization and device trust enhancements.

Member of
Microsoft Intelligent
Security Association



Sign up to Become a Banyan Partner →

Register a Deal →

About Banyan Security

Banyan Security provides secure, zero trust "work from anywhere" access to applications and resources for employees and third parties while protecting them from being phished, straying onto malicious web sites, or being exposed to ransomware. A Flexible Edge architecture enables rapid, incremental deployment on-premises or in the cloud without compromising privacy or data sovereignty. A unique device-centric approach intelligently routes traffic for optimal performance and security delivering a great end user experience. Banyan Security protects workers across multiple industries, including finance, healthcare, manufacturing, and technology. To learn more, visit www.banyansecurity.io or follow us on Twitter at @BanyanSecurity.

